

CHÂTEAU DE SAINT-MARTIN DU TERTRE

Indulge in the elegance
of a truly exceptional setting



CONTENTS

Preface	05
A bit of history Built for celebration!	06
Your wedding at the château A magical day in a unique setting exclusively reserved for you.	09
The reception rooms French-style elegance.	15
The Bridal Suite A secluded haven of luxury and serenity.	33
Guest rooms and family suites Accommodate your loved ones at the château.	43
Our packages Truly priceless moments to cherish forever!	62
Grounds and garden Enjoy an exceptional exterior setting!	65
Furniture included Where beauty meets functionality.	72
Practical equipment We've got every detail covered.	74
Contact us You'll have to see it to believe it.	77



“

PREFACE

Château de Saint-Martin du Tertre is a magnificent setting accommodating the most prestigious weddings in France.

This place of rare beauty, unlike any other, offers endless possibilities to ensure that your wedding is perfect.

Ideally located just 30 minutes north of Paris, this storied estate is captivating for its grandeur and extraordinary charm.

A listed historic landmark, the château features a collection of magnificent salons and grand reception halls which together can graciously host up to 340 guests.

Surrounding the estate, over 100 acres of lush parkland and private forest create a stunning natural sanctuary in the heart of the Île-de-France.

”

A BIT OF HISTORY

At the close of the 19th century, as Paris prepared to unveil the Eiffel Tower, another gem was emerging in the Île-de-France: the Château de Saint-Martin du Tertre.

Between 1876 and 1882, under the direction of architect Gabriel-Hippolyte Destailleur, the estate was entirely revamped to host the grandest celebrations of the Belle Époque. Commissioned by the **Duke of Massa**, grandson of Napoleon I's Minister of Justice, the château became a dazzling stage for Parisian high society.

Our very own “**French Gatsby**,” the Duke was a passionate collector, literary figure, and devoted patron of the arts who welcomed the *crème de la crème* of Paris to discover magical events.

The festivities included lavish dinners, glittering balls, operas performed at the château's private theater, classical concerts played by full orchestras, and fireworks that lit up the night sky.

The gardens were ornamented with rare orchids, elegant fountains, Japanese lanterns, and exotic plants. This atmosphere enchanted princesses, dukes, and artists from across Europe.

Today, that spirit of refined celebration lives on in every wedding held here. Join the enduring legacy of the Château de Saint-Martin du Tertre... **with your own love story.**



“... The sparkling society of tout-Paris called for the creation of a grand ballroom. The Duke of Massa, a patron of the arts and letters, loved to engage Édouard Mangin – conductor at the Paris Opera and professor at the Conservatory – to lead a choir of up to a hundred singers! His prized orchid collection adorned the walls, while the gardens beckoned with the sparkle of colored glass, Bengal lights, and Japanese lanterns. Applause filled the air from guests as distinguished as the Princess de La Tour d’Auvergne, the Duke of Trévise, the Prince of Polignac, the Prince de Broglie, the Count de Ségur, and the Viscount de Noailles.”

Le Figaro, 1889



Duc of Massa - 1892

*André Philippe Alfred Regnier;
grandson of Claude Ambroise Regnier;
Napoleon I's Minister of Justice*



CHÂTEAU DE SAINT-MARTIN DU TERTRE

YOUR WEDDING AT THE CHÂTEAU

“

First of all, allow us to congratulate you on your engagement!

Planning a wedding is about creating a truly one-of-a-kind moment, and it often begins with choosing the perfect setting.

From location and amenities to the beauty of the site and budget limitations, there are many aspects to consider when choosing your venue.

We're here to guide you every step of the way and help shape your vision into an unforgettable celebration.

”



Château location

The château is ideally situated just 30 minutes from Paris and 15 minutes from Charles de Gaulle Airport. Its easy access allows your guests to arrive quickly and comfortably.



Guest capacity

The estate's elegant salons and grand reception halls can host up to 340 seated guests, including 220 in the spectacular Grand Ballroom alone. You'll dine inside the château itself, surrounded by historic charm and stunning architecture, with soaring 20-foot-high ceilings that make every moment feel monumental.



Access and celebration hours at the château

Renting a château is wonderful, but having time to truly enjoy it is even better! On your wedding day, you'll have access to the château from 10:00 a.m., which will give you time to settle in and savor every moment.

The celebration may continue until 5:00 a.m. Guests staying overnight are welcome to linger through the next morning or even longer depending on the package you choose.



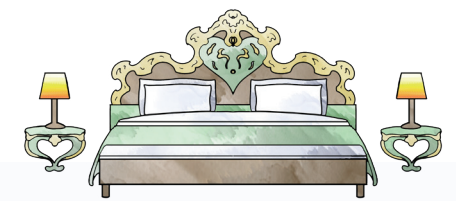
Our pricing

We offer three tailored pricing packages – Sapphire, Emerald, and Diamond – which you'll find detailed on pages 62 and 63 of this brochure.



Furniture and sound system included

To make your planning as effortless as possible, all the tables and chairs needed for your event are included in the rental. You'll also enjoy use of our built-in sound system and ambient lighting to create the perfect atmosphere from day to night.



The Bridal Suite

An elegant, spacious bridal suite is reserved exclusively to the newlyweds. It features a beautifully appointed bride's lounge, a romantic bedroom sanctuary, and a private en-suite bath. Every detail of the suite whispers of beauty and serenity, offering a romantic retreat where you'll cherish every moment of your special day.



Separate preparation lounges for the bride and groom

Two distinct preparation lounges are designed to offer each partner their own comfortable, secluded space to get ready for the ceremony, surrounded by loved ones.

This is a private, poignant moment... a quiet pause before the magic unfolds when the couple reunites, hearts racing, radiant with joy.



Guest rooms and family suites

Upstairs, your guests can enjoy beautifully appointed family suites and elegant guest rooms, offering accommodation for up to 32 guests depending on the package you select.

For additional guests, we partner with nearby hotels to ensure everyone is welcomed in the utmost comfort.



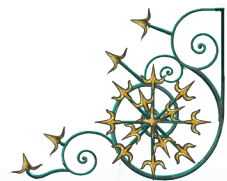
Preferred caterers

To offer you optimal support in your organization, we've selected a list of trusted catering partners known for their excellence and impeccable service. Their prices will vary depending on your preferences and any specific cultural or religious requirements. In any case, you're free to bring in a caterer of your choice, provided that they meet certain quality and compliance conditions.



Additional services

DJs, floral designers, photographers, luxury car rentals, videographers, wedding cake artists, ceremony officiants, hair and makeup stylists, seamstresses, fireworks experts... We've curated a selection of talented vendors that we recommend for your convenience.



Exclusive use of the château

This is your day: a once-in-a-lifetime moment meant to be shared only with those closest to you.

That's why we host only one event at a time.

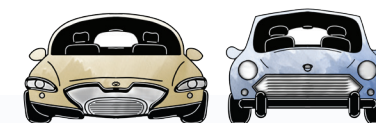
You'll have the entire estate to yourselves for a truly private, unforgettable celebration.



Outdoor spaces

Our outdoor spaces are yours to enjoy throughout the day.

The sweeping château esplanade offers a magical setting for a refined cocktail hour. The lawns, colonnade, and pond provide stunning backdrops, whether for a civil or religious ceremony. Should the skies open up, we'll seamlessly move your plans indoors. Rest assured that your event will be elegant, come rain or shine.

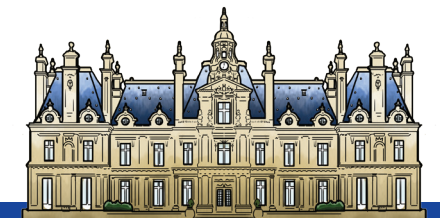


Guest parking

To preserve the beauty and intimacy of your day, guest parking is discreetly located behind the château. This keeps cars out of sight in photos and during the ceremony.

Five parking spaces near the Grand Ballroom are reserved for guests with limited mobility.

Vendors park in a separate area, ensuring smooth logistics throughout your event.



Save the date

We'd be delighted to provide more information or arrange a private tour of the estate.

Once you've chosen the package that suits you best, we'll prepare a personalized contract in your names. All it takes to reserve the date of your choice is a 20% deposit.



CHÂTEAU DE SAINT-MARTIN DU TERTRE

THE RECEPTION ROOMS



Floor
area
206 m²



Cocktail
capacity
440 people



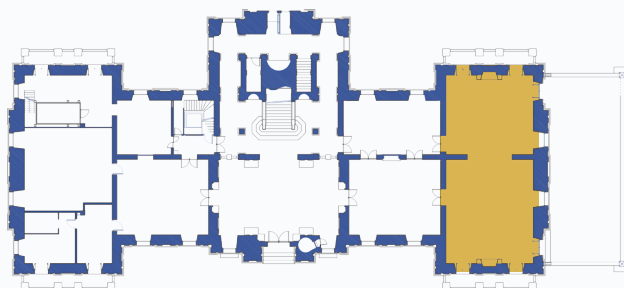
Seated dinner
capacity
220 people

THE GRAND BALLROOM

The crown jewel of the château, the Grand Ballroom is grandiose and graceful: a breathtaking space that embodies the very essence of French elegance.

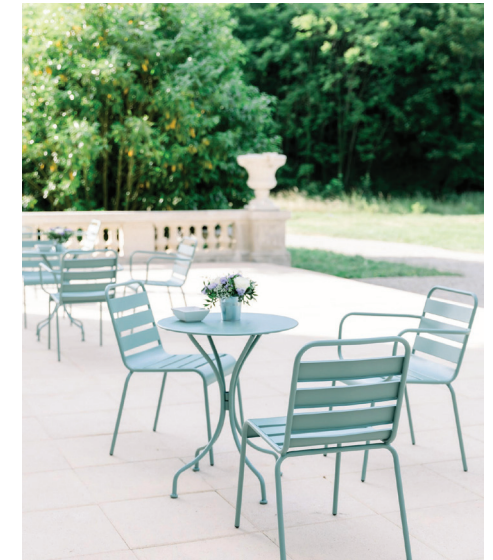
Meticulously restored to its original splendor, the hall features soaring ceilings adorned with monumental moldings, a dramatic series of tall windows that flood the room with natural light, and glistening crystal chandeliers that bring breathtaking radiance to every occasion.

The atmosphere is bright and airy, every detail refined. Two monumental fireplaces – intricately carved and topped with classical bas-reliefs – anchor the room and add a note of solemn beauty, elevating the space with a sense of grandeur and historical prestige.



Grand Ballroom
floor plan





Floor
area
160 m²

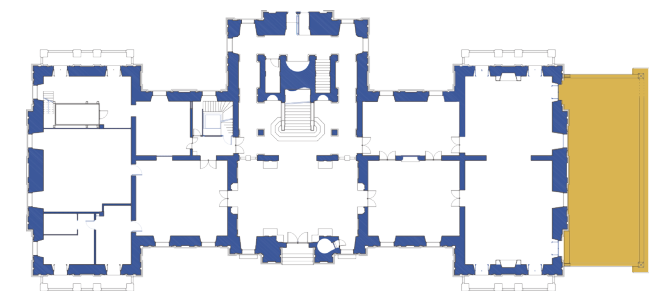
Cocktail
capacity
250 people

Seated dinner
capacity
160 people

The Ballroom Terrace, an open-air stage

At the foot of the château's north facade, the grand terrace stretches out like an open invitation to celebration and connection.

Framed by stone balustrades and overlooking the park, it is the perfect setting for a sunset cocktail: a moment suspended between elegance and emotion.



The ideal setting for cocktail hour or a dessert buffet, the Red Salon can seat up to 80 guests.



Floor
area
88 m²

Cocktail
capacity
160 people

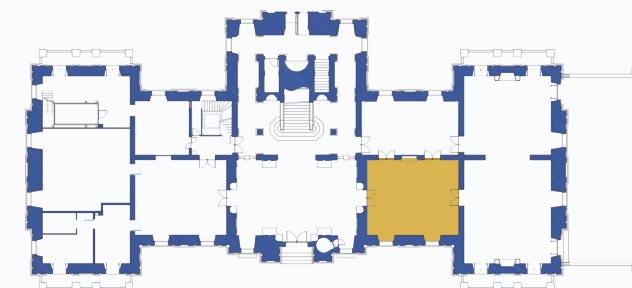
Seated dinner
capacity
85 people

THE RED SALON

This salon perfectly embodies the grandeur of French opulence. Every detail speaks of elegance, offering a truly sumptuous setting.

With its deep red walls adorned with intricate moldings, black-and-white checkerboard floor, and grand mirror above a gray marble fireplace, this space harmoniously blends classicism and majesty in a carefully composed decor.

The magnificent crystal chandelier, paired with finely crafted gilt sconces, is a unique creation of rare elegance that casts a warm, spectacular glow.



Red Salon
floor plan



Floor
area
88 m²



Cocktail
capacity
160 people



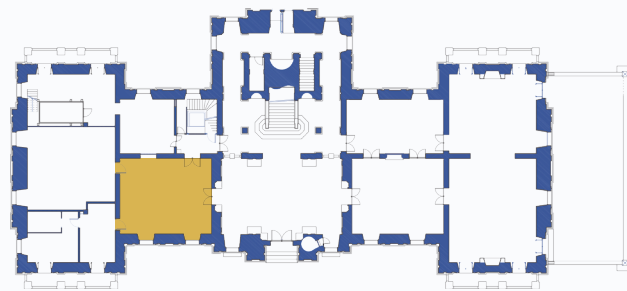
Seated dinner
capacity
85 people

THE WHITE SALON

A jewel of elegance and refinement, the White Salon is a lavish setting where every detail enhances the beauty of the present moment.

Its gilded walls, subtly accented with soft beige tones, captivate the eye from the moment you enter. The ceiling is adorned with seashell-shaped moldings, reflecting the grandeur of the space, as a majestic crystal chandelier bathes the room in shimmering light.

The black-and-white checkerboard floor adds a touch of bold character, while large windows flood the salon with natural light and offer sweeping views of the château's fabulous gardens.



White Salon
floor plan



Perfect for hosting a cocktail reception, an elegant dinner, or an intimate gathering, this exceptional room promises your guests an unforgettably prestigious experience.



Floor
area
67 m²

Cocktail
capacity
80 people

Seated dinner
capacity
60 people

THE LIBRARY

The flexible, fully adaptable library is a lounge that can easily be transformed into an additional dining room.

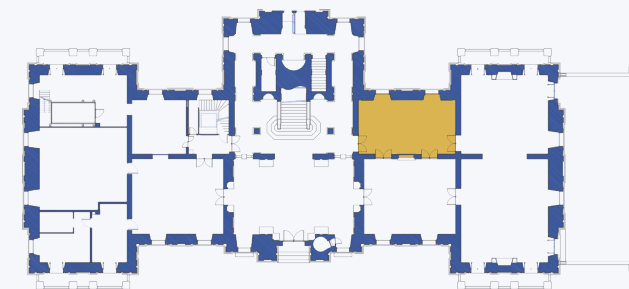
Tucked away at the heart of the château, this warm, secluded space is ideal for more intimate moments on your wedding day. Surrounded by antique wood paneling, it offers a hushed, authentic setting that invites guests to relax and unwind.

With its elegant furnishings, plush armchairs, and soft lighting, the atmosphere here is cozy, making it the perfect hideaway for the newlyweds, close family, or anyone seeking a moment of calm away from the excitement.



The Lounge

The perfect setting for a charming photo shoot or for sharing a quiet nightcap at the end of the evening.



Library
floor plan



Floor
area
114 m²



Cocktail
capacity
220 people



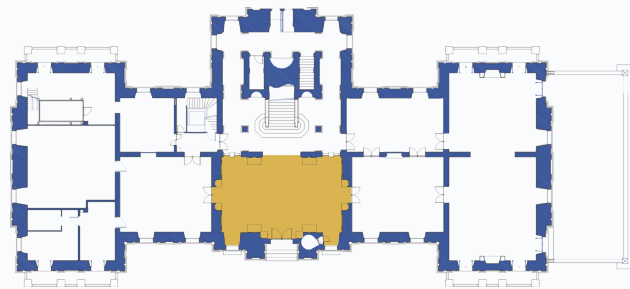
Seated dinner
capacity
110 people

THE GRAND ENTRANCE HALL

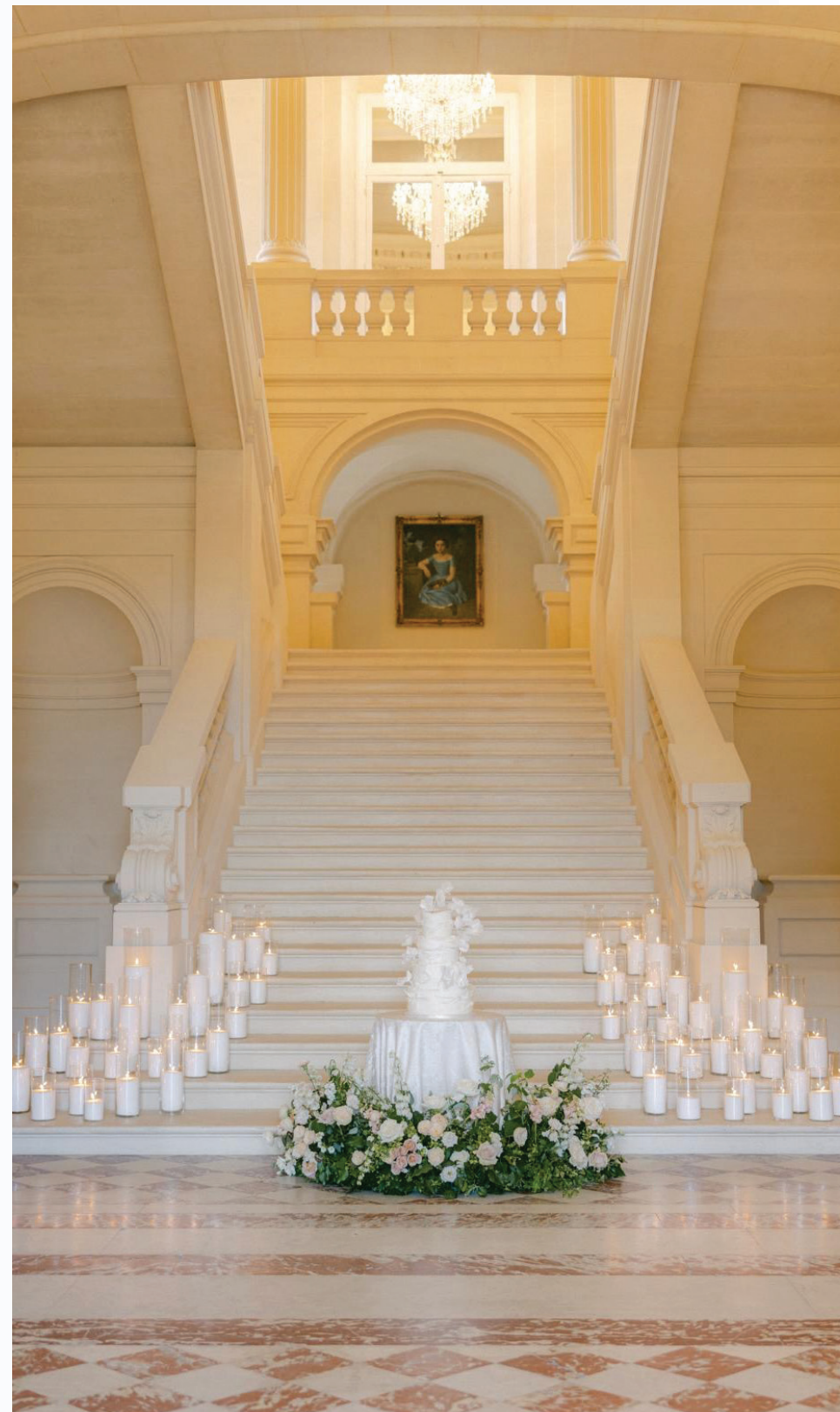
A majestic arrival is the perfect prelude to the emotions of your once-in-a-lifetime day. This is where it all begins, in a setting steeped in history and timeless elegance.

A true showcase for beauty, the grand hall captivates with its classical grace and architectural grandeur. Flanked by fluted columns and crowned with a soaring ceiling adorned with intricately carved moldings, the space is bathed in natural light, radiating a sense of solemn beauty and warmth.

The red-and-white marble checkerboard floor adds a final touch of sophistication, while the tall paneled doors provide a striking backdrop for your most unforgettable couple portraits.



Grand Entrance Hall
floor plan



An unforgettable occasion

A breathtaking setting where you may greet your guests in style, elegantly transition from ceremony to reception, or simply have these momentous moments captured for all time with flawless grace.

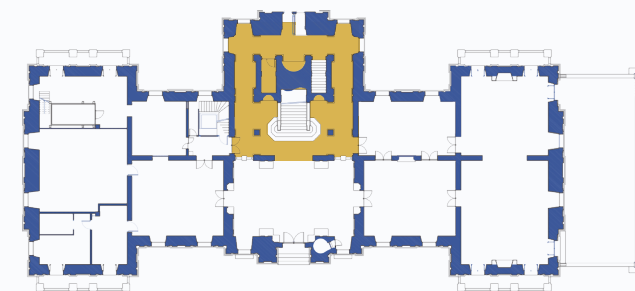


THE MONUMENTAL STAIRCASE

A dazzling monumental staircase opens within the heart of the château, a shining symbol of refinement and dignity.

Surrounded by sculpted columns and crowned with sparkling chandeliers, this staircase invites you to step into a fairytale. Bathed in natural light, it sets the stage for majestic moments: the bride's grand entrance, an incredible photo session, or a cake-cutting ceremony at the foot of its ornate balustrades.

Laden with flowers, dotted with candles, or simply revealed in all its glorious classical architecture, the staircase becomes the backdrop for your most heartfelt memories. It embodies the timeless elegance and grandeur of the entire estate.



Monumental staircase
floor plan



Floor
area
56 m²



Cocktail
capacity
200 people



Seated dinner
capacity
110 people

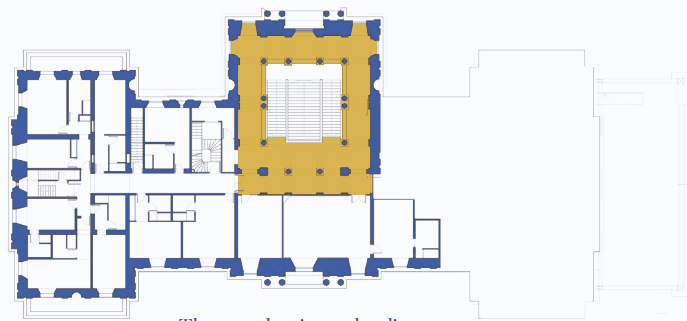
THE GRAND STAIRCASE LANDING

A majestic setting for an indelible moment.

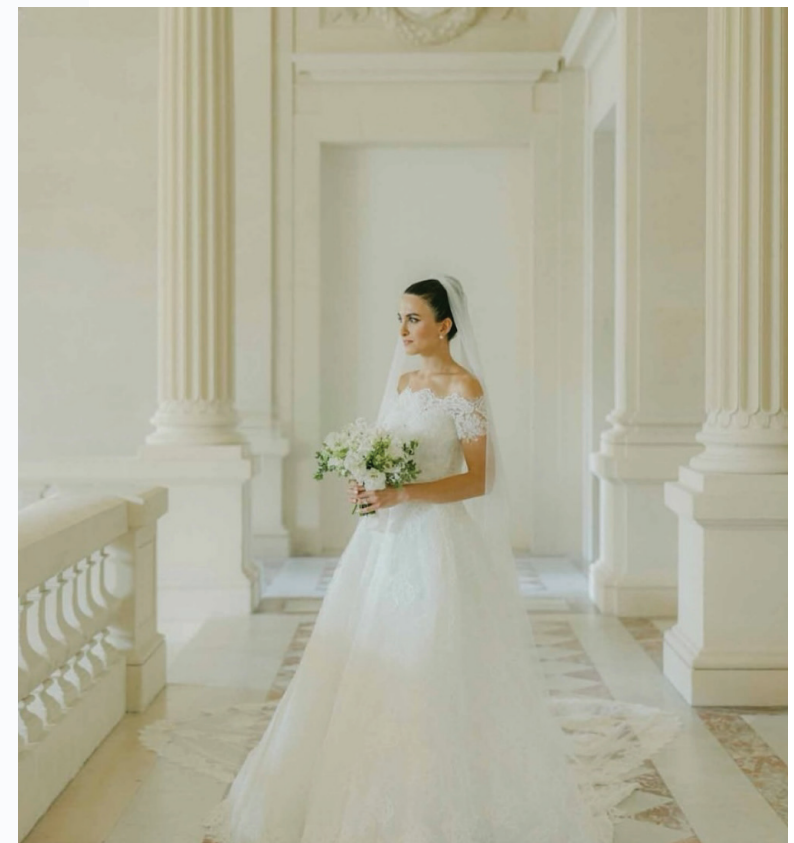
In this opulent space bathed in natural light, the bride strikes a pose before the grand windows of a formal salon. Imposing columns, sculpted balustrades, and crystal chandeliers all highlight the grandeur of classical architecture.

Every detail of this scene reflects timeless elegance and refinement, creating the perfect atmosphere for wedding memories imbued with grace and nobility.

This lavish jewel box reflects the bride's own stunning beauty. History and dreams meet in this prestigious setting for a celebration beyond compare.



The grand staircase landing
floor plan - 2nd floor





CHÂTEAU DE SAINT-MARTIN DU TERTRE

THE BRIDAL SUITE

THE BRIDE'S LOUNGE

— For the bride's preparation



The Bride's Lounge is a cocoon of calm for a momentous beauty ritual.

In the intimate setting of the bridal suite, the bride's lounge offers a calm and comforting space where the special lady may get ready for her big day, secluded from the day's excitement. Its grand balcony, delicately adorned walls, soft blue woodwork, gilded chairs, and period furnishings create an atmosphere that is both elegant and welcoming.



Floor area
58 m²

This cherished space sets the stage for the day's first shared moments: final touches, quiet words shared with loved ones, the calm before the magic. This is where the bride begins to truly shine, surrounded by splendor, in a setting worthy of this once-in-a-lifetime moment.





THE NUPTIAL BEDROOM

THE BRIDAL SUITE



An elegant bedroom full of character, dressed in a palette of deep, rich greens.

The newlyweds' bedroom exudes serenity and grandeur. Soft light filters through tall windows, bringing the fine fabrics to life and highlighting the intricate details of the antique furnishings.

At its heart, the iconic gilded and hand-carved Venetian "lover's bed" promises a romantic night in this fairytale setting where every detail is part of the story. Crystal chandeliers, draped curtains, ornate moldings, and rich materials come together in perfect harmony, offering a plush retreat at the very heart of the château.

Floor area
24 m²



THE GROOM'S LOUNGE

— For the groom's preparation



Set in an elegant, masculine atmosphere, the Groom's Lounge blends classic charm with modern comfort.

Burgundy leather Chesterfield sofas make a bold statement, enhanced by natural light and the contrast of other noble furnishings. A royal blue carpet adds warmth and depth, while a crystal chandelier overhead casts a majestic glow across the room.

A stately minister-style desk and a large mirror provide the groom with a quiet, comfortable space where he may prepare for his big day in peace.



Floor area
29 m²

A magnificent 17th-century triptych mirror offers a head-to-toe view to ensure that every detail is just right.



Balancing tradition and refinement, this lounge offers a unique experience worthy of the château's extraordinary setting.



CHÂTEAU DE SAINT-MARTIN DU TERTRE

OUR GUEST ROOMS & FAMILY SUITES

OUR SIGNATURE GUEST ROOMS



Time stands still in this breathtaking setting.

This room, bathed in soft light filtered through long emerald-green curtains, offers a charmingly hushed ambiance and delicate decor. The walls are adorned with rich damask patterns that subtly echo the crystal chandelier above.

On the floor, elegant vintage tiles evoke the noble homes of a bygone era, while the tufted headboard blends seamlessly into this calm, distinguished setting. Every detail is carefully considered to offer an experience that is both visually refined and deeply soothing, honoring the heritage of the château.



Floor area
30 m²



Room
number





A haven of charm and tranquility.

Designed to offer your loved ones a peaceful, comfortable retreat, this room blends classic elegance with a welcoming atmosphere. Period furnishings, fine materials, and soothing tones come together in a refined setting, perfect for rest and relaxation.

Ideally located at the heart of the château, it allows your guests to extend the magic of the wedding in an intimate and thoughtfully curated space worthy of the occasion. Every detail is carefully chosen to reflect authenticity, comfort, and the art of hospitality.



Floor area
20 m²

3

Room
number





Quiet charm and elegant comfort.

This room is an invitation to relax with its soft, understated decor, reflecting restraint and refinement. Crisp furnishings, gentle hues, and natural light create the perfect atmosphere where your guests may unwind after a day of celebration.

Thoughtfully designed as a cozy retreat, it offers your guests high-quality comfort in a setting filled with charm and authenticity.

An ideal space to welcome your loved ones with care and elegance while extending the unique experience of a château wedding.



Floor area
18 m²



Room
number





A soft, bright retreat.

Natural light highlights the elegant simplicity of this room's decor. Fine materials, delicate linens, and soft, airy tones create a soothing ambiance where your guests may enjoy a restful stay at the heart of the château.

Thoughtful attention to detail shapes a welcoming space where modern comfort and classic charm blend in perfect harmony. An ideal setting for your guests to feel truly cared for, extending the warmth and refinement of your wedding celebration.



Floor area
19 m²



Room
number





OUR CLASSIC GUEST ROOMS

Simple elegance at the heart of the château.

Blending understated style with historic charm, this room offers your guests a peaceful and refined retreat. Carefully chosen furnishings, soft textures, and calming colors come together to create a warm and inviting atmosphere.



Floor area
17 m²



Room
number



Understated refinement.

Tall windows overlook the park and bathe the room in natural light. Muted tones and various romantic paintings bring it an original flourish.



Floor area
17 m²



Room
number





A haven of softness and authenticity.

This room captivates with its warm, bright atmosphere, where the charm of historic materials meets the comfort of thoughtful design.



Floor area
18 m²



Room
number

8



The most contemporary.

This third-floor room offers a soothing, contemporary atmosphere. Black-and-white floral wallpaper and a light tile floor offer refined understatement.



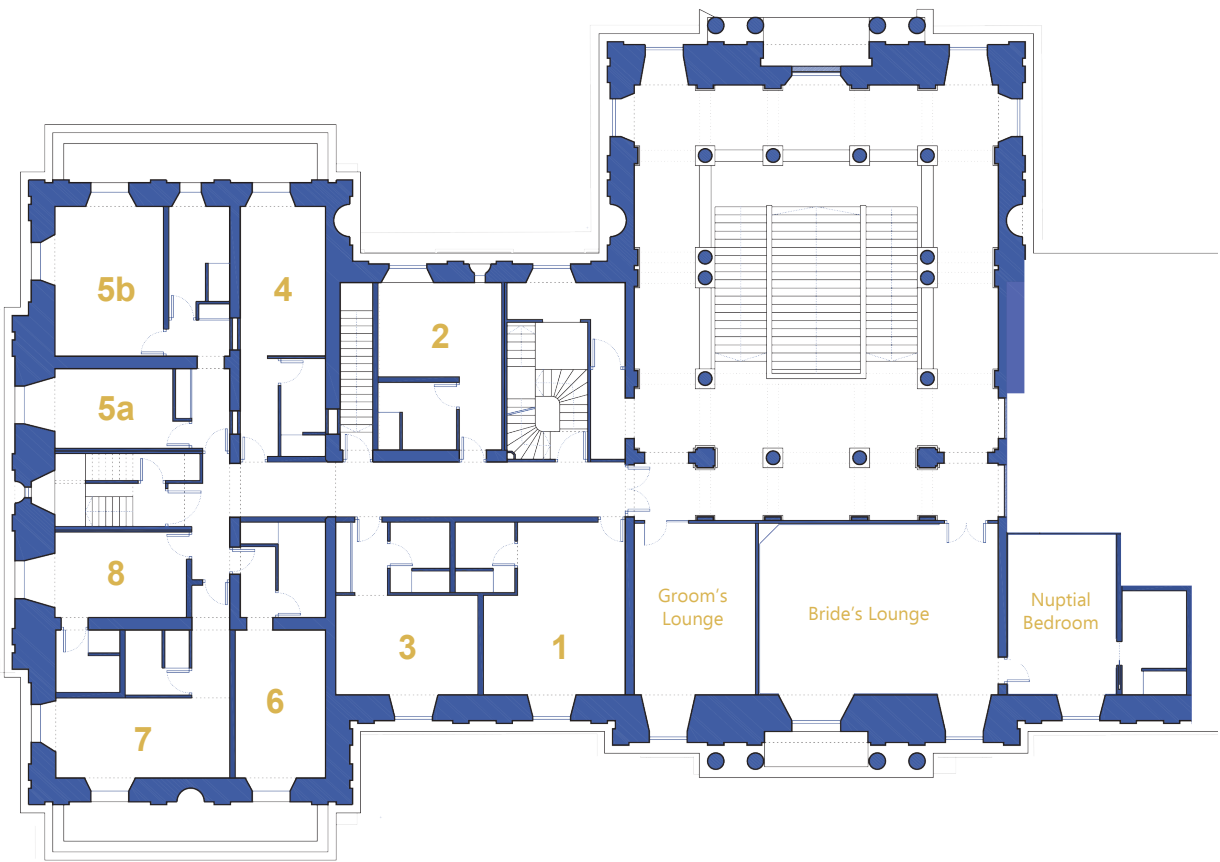
Floor area
20 m²



Room
number

9





Floor plan with room numbers
2nd floor

The most spacious.

Both beautiful and original, your guests will appreciate this room both for its atypical decoration and generous size.

Floor area
26 m²

10

Room
number



Floor plan with room numbers
3rd floor

OUR FAMILY SUITE 4/6 PEOPLE



Enjoying time as a family.

Spacious and thoughtfully decorated, this family suite features two separate bedrooms and is designed to accommodate up to six guests in a warm and refined setting. The first room, with its deep blue walls and golden accents, includes a double bed and a convertible sofa.

Floor area
22 m²

5b
Room
number



Floor area
15 m²

5a
Room
number

The second bedroom, decorated with golden patterns, also features a double bed and a soft, light-filled atmosphere.

Guests will share special moments of togetherness in this inviting family suite. The bathroom is shared, with individual towels thoughtfully placed on each bed before their arrival.



A private hallway separates the two rooms, ensuring both comfort and privacy for everyone.

To accommodate up to six guests, the convertible sofa will also be prepared in advance. Its exceptional comfort is sure to surprise even the most discerning guests.

OUR FAMILY SUITE 6/8 PEOPLE



The comfort of staying together as a family.

This elegant family suite, decorated in a refined classic style, includes several bedrooms and can accommodate up to eight guests. The first bedroom, warm and inviting, features rich red tones and offers a large double bed along with a convertible sofa for two.



Floor area
24 m²

11b

Room
number



Floor area
13 m²

11a

Room
number

A second bedroom, with walls subtly adorned in toile de Jouy, features a double bed and offers a soft, calming atmosphere.



Floor area
14 m²

11c

Room
number

A warm, inviting third bedroom is adorned in deep red tones and furnished with a large double bed and a convertible sofa for two guests.

Each space is thoughtfully designed to offer both comfort and privacy; only the bathroom is shared. Ideal for families or groups of friends seeking a spacious, elegant accommodation.

OUR RANGE OF PACKAGES

As part of tailoring your wedding to your needs, we offer a range of packages to ensure that you find the option that is best for you.

Sapphire package

€18,900 tax-inclusive

The perfect package to celebrate your wedding in a truly exceptional setting.

Exclusive use of the château
on your wedding day

Access to all reception areas: lounges, Grand Ballroom, Library, Terrace, Grand Entrance Hall, and more

The Bridal suite with
Bride's Lounge and Nuptial Bedroom

Provision of furniture: chairs, tables, sofas, etc.

Sound system
and mood lighting

Access to the château's outdoor spaces: park, terrace, main esplanade, pond, ceremonial alley, colonnade, and more

Separate private groom's lounge

Access to catering kitchens, cloakroom, restrooms, and parking

Housecleaning of the venue after
your departure

Emerald package

€23,900 tax-inclusive

Your closest guests also stay
at the château.

All the features of
the Sapphire package

+

Accommodation for 32 guests
in double rooms and family suites

Early access to the ground-floor
preparation room

Access to the breakfast area

Diamond package

€38,900 tax-inclusive

The château is exclusively reserved to
you and your guests for three days.

All the features of
the Emerald package

+

Arrival the first day at 10 a.m.,
Departure the third day at 12 p.m.
(8 p.m. on weekdays).





CHÂTEAU DE SAINT-MARTIN DU TERTRE

GROUPS & GARDEN

The esplanade, perfectly symmetrical and majestic.

The château esplanade provides a breathtaking backdrop for your outdoor ceremonies.

Two bronze lions, gracefully aged with patina, stand as proud guardians atop their pedestals. They strike contrasting poses—one peacefully resting, the other alert—to symbolize the quiet strength of the estate.

These characterful sculptures lend the esplanade a majestically artistic and solemn atmosphere. The sweeping esplanade offers a royal vista of the formal French gardens. This is the perfect place for a civil or religious ceremony or a cocktail reception.

The spot also provides the best vantage point to enjoy fireworks launched from the garden, creating a magical spectacle beneath the illuminated château. A moment suspended in time, unforgettably grandiose and romantic.



The facade: stunning by day and by night.

By day, the blonde stone facades of the château capture every ray of sunlight. By night, subtle lighting reveals the noble lines and intricate details of the architecture.

The main facade becomes the ideal setting for an outdoor ceremony or cocktail reception.

Seated before the elegant row of windows and columns, guests are immersed in a scene reminiscent of grand historic weddings.

Every photo taken here is naturally iconic. From the grand entrance gate to the final step of the staircase, every detail is designed to elevate the moment.

The château is not just a venue: it is a living stage steeped in history where unforgettable memories are forged.

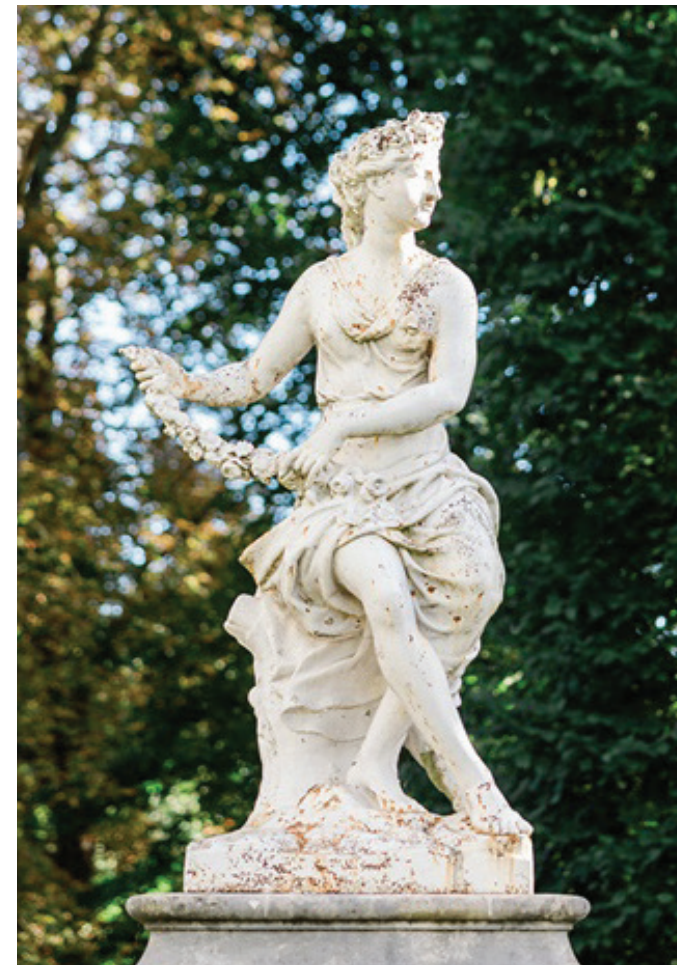




The park rotunda: a sanctuary of romance and majesty.

Nestled at the heart of the park, the rotunda of the château offers a classic, enchanting setting.

Surrounded by greenery, this elegant stone structure with sculpted columns and majestic arches recalls the architecture of 18th-century French gardens. At its center stands a proud marble statue, enhancing the poetic atmosphere of this exceptional place.



Whether reserved as retreat for quiet reflection or showcased as an open-air stage, the rotunda is perfectly suited for both religious and civil ceremonies. Its timeless charm makes it one of the most sought-after spots on the estate.

The pond, a natural setting for serene moments.

Nestled in a peaceful corner of the grounds away from the excitement, the pond offers a serene, picturesque setting where nature quietly takes center stage.

Surrounded by majestic trees whose leaves transform with the seasons, this is the perfect spot to extend your celebration in a relaxed, intimate atmosphere.

Here, guests will be delighted to gather for a rustic brunch or simply for a contemplative moment by the water.

It's an ideal place to pause, breathe, and create unforgettable memories within the enchanting sweep of the estate.



The stately driveway sets the tone even before the château comes into view.

It stretches endlessly between lines of centuries-old trees, slowly unfolding like a majestic promise. Framed by lush greenery, this impressive approach immerses visitors in a historic, romantic scene.

Whether arriving for a wedding, another type of event, or simply to tour the château, traveling down this path is an unforgettable experience.

It provides a stunning introduction to this grand estate in any season. The greenery gradually unfurls, theatrically raising the curtain on the château. The waking dream begins as it is slowly revealed.



Entrance to the estate, as you pass the monumental gates,

your eyes are drawn to a perfectly manicured lawn that stretches toward the château beyond.

Flanked by classic statues and framed by ornate historical buildings, this verdant avenue offers a striking first impression. The contrast between the warm stone facades and the lush green park sets a truly exceptional scene where every arrival is a moment to remember. A breathtaking scene designed to inspire awe from the very first step.



FURNITURE INCLUDED

Whatever package you choose, we provide a carefully curated selection of furniture to make your wedding day organization effortless.

From elegant tables and Napoleon chairs to velvet sofas perfect for lounging, each piece is thoughtfully selected to blend seamlessly with the château’s stunning surroundings.

Whether you opt for a romantic, chic, or rustic wedding theme, our furnishings will subtly enhance the unique atmosphere of your special day. All the furniture listed below is permanently stored in a room on the château’s ground floor.



White Napoleon chairs: These iconic, refined chairs have distinctively elegant lines and timeless style. Comfortable and lightweight, they bring elegance to any decor, adding a touch of understated sophistication to your celebration. Perfect for the most discerning ceremonies and receptions, these white Napoleon chairs offer delightful seating with a delicate aesthetic that your guests will surely appreciate.

1 Wedding head table in 3 parts: center 180x120 cm (70.8x47.2 inch)

20 round 180 cm (70.8 inch) tables: These large, elegant tables comfortably accommodate ten to twelve diners for warm, convivial conversations.

10 round 150 cm (59 inch) tables: Perfectly suited to smaller gatherings, these tables easily seat eight to ten guests in a friendly, elegant way.

10 rectangular 240x76 cm (94.4x29.9 inch) tables: Ideal for distinguished table arrangements, each table comfortably seats eight to ten guests.

10 rectangular 200x70 cm (78.7x27.5 inch) tables: Versatile and convenient, these tables are better suited to smaller groups, as each seats six to eight diners.

5 rectangular 180x70 cm (70.8x27.5 inch) tables: Compact and functional, this format is ideal to set a warm, convivial table for four to six guests.

7 120 cm (47.2 inch) high cocktail tables: A round 60 cm (23.6 inch) diameter format.

4 low round glass coffee tables

5 Blue velvet sofas

340 white Napoélon chairs

38 metal outdoor chairs

9 metal outdoor side tables

2 infant high chairs

2 infant cribs



PRACTICAL EQUIPMENT

Sound system: All the reception rooms of the ground floor are equipped with a speaker system. The volume in each room may be independently adjusted. Microphones are also available for speeches. Light columns are equipped with various professional lighting effects to help create a festive atmosphere.

Cloakroom: There is a large cloakroom available for your use on the ground floor, including a small additional dressing room for your guests' convenience.

Restrooms: There are well-appointed restrooms on the ground floor. The men's and women's restrooms are separate. The ground floor of the château also features facilities accessible to people with reduced mobility.

Nighttime terrace with smoking area: Located at the back of the château, this outdoor space offers a quiet place to chat and enjoy the stars. It also provides convenient access for your guests to reach their cars.

Catering preparation area: A large, semi-equipped hot and cold catering preparation area is available for use by caterers. A 172 ft² walk-in cooler makes it possible to quickly store food at the optimal temperature. A cloakroom, restroom, and lounge area are provided for the caterer.

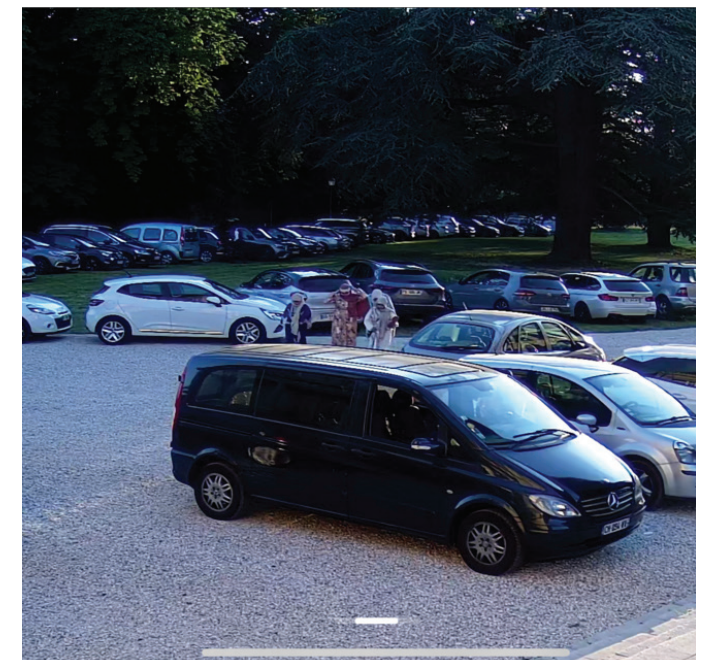
Guest parking: An immense parking lot behind the château is reserved to your guests. This keeps cars out of sight in your photos. The guest parking lot is completely separate from the vendor parking lot.

Vendor parking lot: All the vendors park in a separate lot. From here they have access to a loading dock and a concrete ramp for easy access to the château. Your guests will not see the vendors' vehicles.

Pond terrace: Perfect for hosting a ceremony, a next-day brunch, or simply soaking up the sun.

Pond catering preparation area: A small, semi-equipped catering preparation area is located right next to the pond terrace, making catering logistics much easier.

Pond restrooms: Restrooms are conveniently located near the pond terrace. The men's and women's restrooms are separate. Facilities for the handicapped are also available.





CONTACT US

By telephone:

Main reception desk: +33 9 67 25 18 19
7:30 a.m. to 7:30 p.m. – Saturday 8:00 a.m. to 12:00 p.m.

Events and inquiries:

Sacha Guchez: +33 7 75 75 75 83

By email:

info@chateausmdt.com
sacha.guchez@chateausmdt.com

By Instagram:

[Chateau_smdt](#)

By our website:

www.chateaudesaintmartindutertre.com

Address of the château:

Château de Saint-Martin du Tertre
Allée de la fontaine au Roy
95270 Saint-Martin du Tertre, France

  15 min  Paris-Charles de Gaulle
International Aéroport

  30 min  Paris



CHÂTEAU DE SAINT-MARTIN DU TERTRE